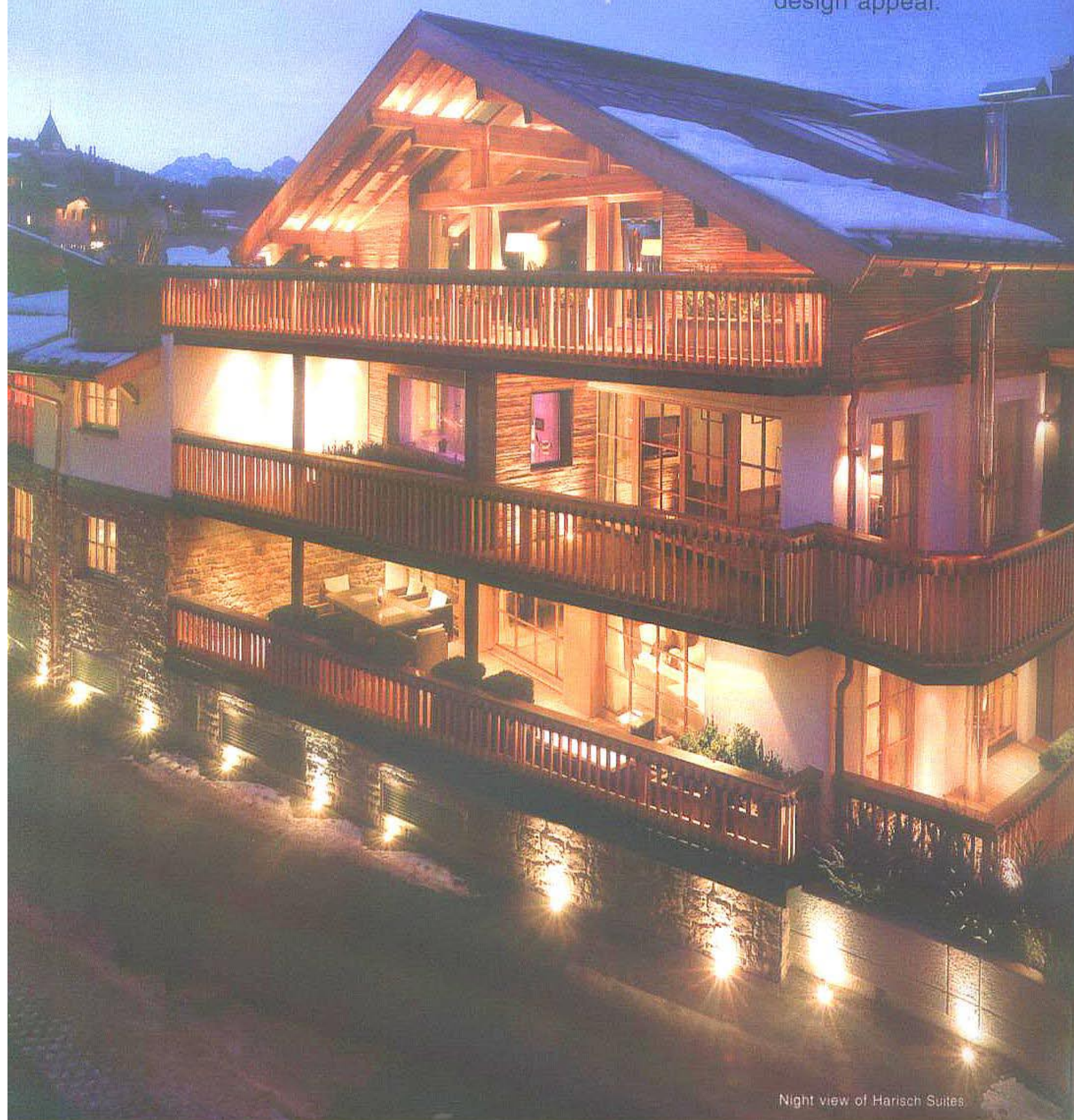


Tirolean Flourish

Uppercrust Alpine Ski wonderland Kitzbuehel in Tirol-Austria regales as a hospitality haven with signature boutique hotels effusing chalet warmth and swish design appeal.



Night view of Harisch Suites

Luxury lounge of Harisch Suites.



Surrounded by the picturesque Austrian Alps in the heart of Tirol is a world-class, uppercrust ski paradise – petite in size, big on premium attractions. The property has witnessed the presence of world's celebrated bigwigs, personalities, sports people and luminaries. This is Kitzbuehel, which is also home to unique designer boutique hotels and resorts.

Tirolean Suite of Hotel Schwarzer Adler





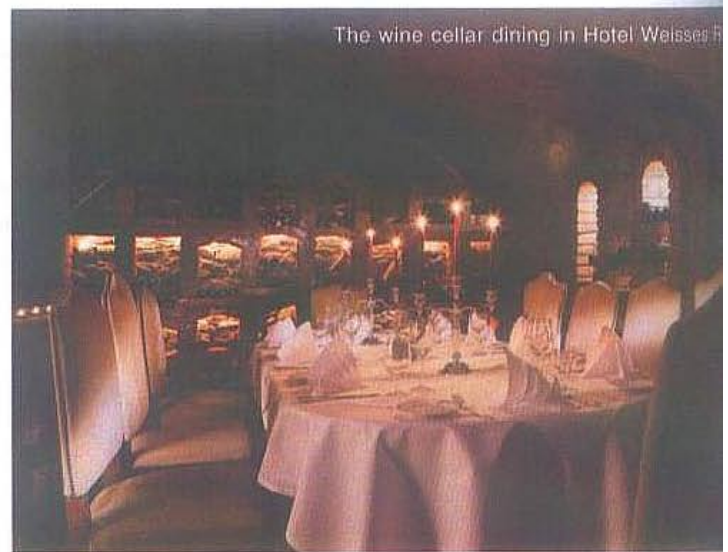
BOUTIQUE CHIC

With a sprawling rooftop temperature-controlled swimming pool overlooking gorgeous snow-clad Alpine peaks and undulating meadows, is the Hotel Schwarzer Adler, designed in typical Tirolean architectural style. The award-winning designer luxury hotel of the Harisch Hotels Group blends traditional woodwork and local craftsmanship with ultra-modern, straight line accents with panache.

The Schwarzer Adler's rooms and suites are elegantly designed using premium materials fused with bright accent colours that lend sophistication and style to the various private and public areas. Light charcoal grey on cushioned walls with deep vermillion sofas and partitions share attention with sheer wispy veils on Alpine wood frames with deep olive green and brushed black sofas. King beds in sparkling white linen match tones with golden beige carpet complemented with suede pearl white wall finishes, bright red and ultramarine pedestal lamps and avant-garde lighting fixtures. They all synergize into an elation of design profusion that seeks your critical approval.

The traditionally Tirolean accents on deeply furrowed pinewood and hand plastering reminiscent of early Austrian 'Gasthaus' architecture takes over specific areas of this boutique hotel, in their designer suites, atrium-reception and more in their much awarded Michelin Star

The wine cellar dining in Hotel Weisser H



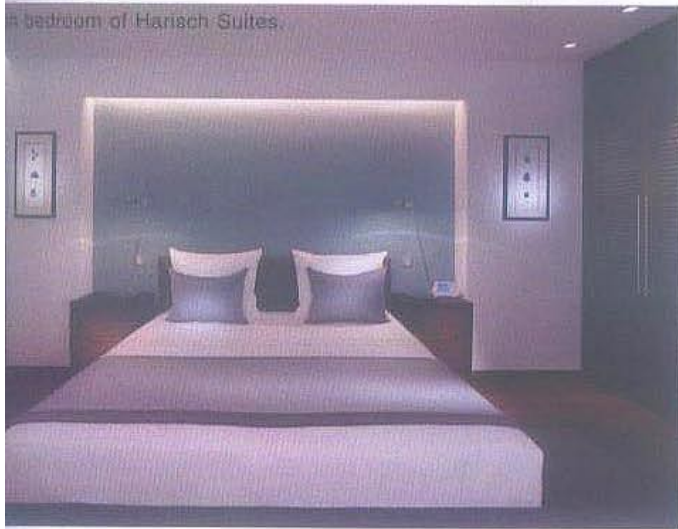
Harisch Su





The wellness spa in Harisch Suites.

A bedroom of Harisch Suites.



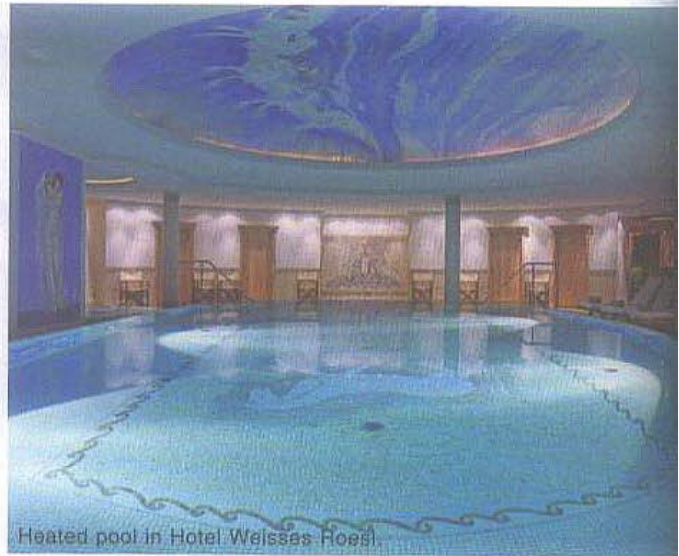
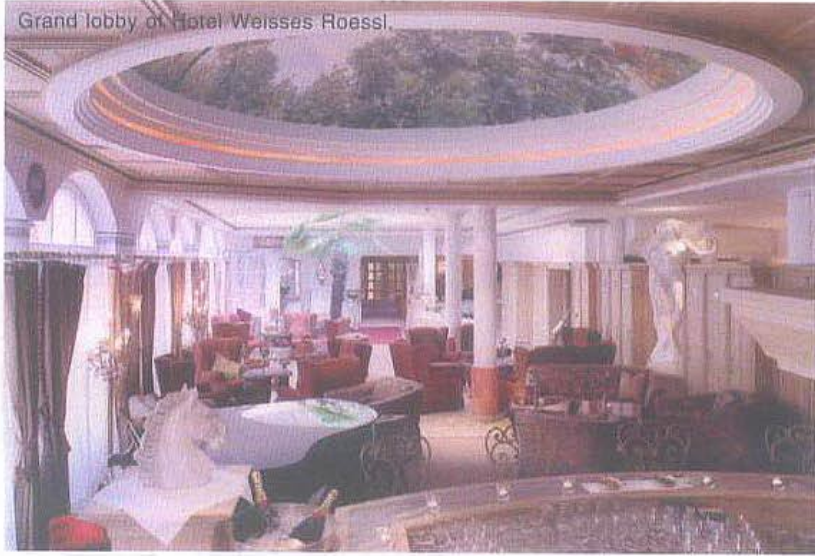
fine dining Tirolean restaurant — Neuwirt. Here country finish white abrade walls that beam across friezes and paintings of Tirolean lore, wooden benches and partitions in deep viridian and reds, the windows resplendent in floral blooms and quaint red check flowing curtains.

THE GRAND STALLION

That's the apt coronation for 'The White Horse' or 'Der Weisses Roessl'. Located strategically in the heart of the Old Town in Kitzbuehel, this grand five-star iconic landmark is a repository of exemplary design and architecture. Juxtaposing the traditionally classical and Baroque with uber chic and flamboyant, this hotel has it all for discerning cognoscenti from the world over.

On one hand you admire their stone and rock fireplaces with wrought-iron gates, period Italian marble tops and settees, hand-painted wall frescoes, slatted wooden ceilings and hand treated lush raw hide sofa covers in deep crimson. On the other hand you stop to absorb the ornate silver candelabras, Austrian crystal chandeliers, sparkling brass fittings, jacquard classical

Grand lobby of Hotel Weisses Roessl.



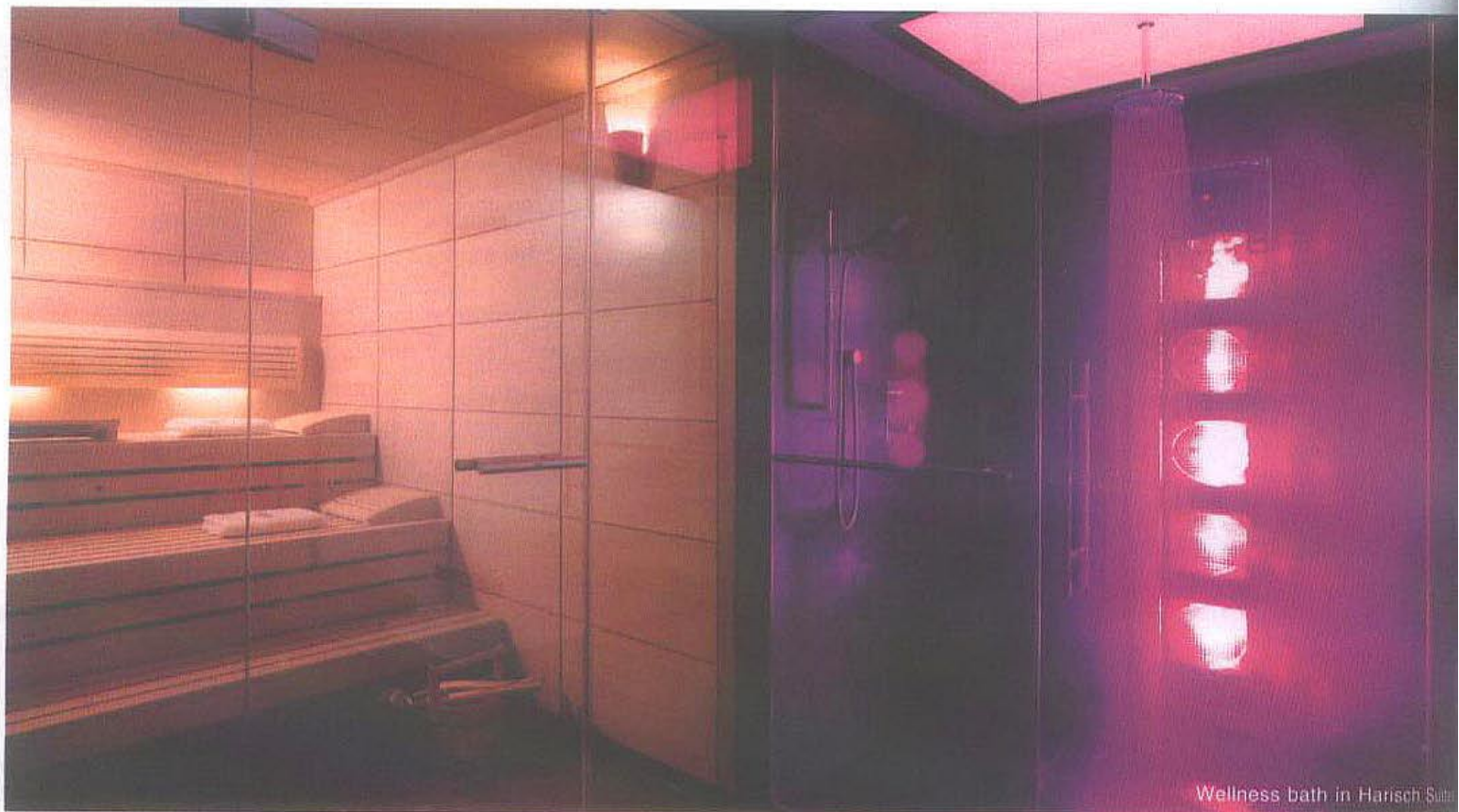
Heated pool in Hotel Weisses Roessl.

art tapestries and sink-in velvet cushions at their svelte bar. And then the spacious suites with Grecian columnades, sparkling white marble desks, Alpine teak woodwork and furniture and gracious gold braided curtains and suede leather seating.

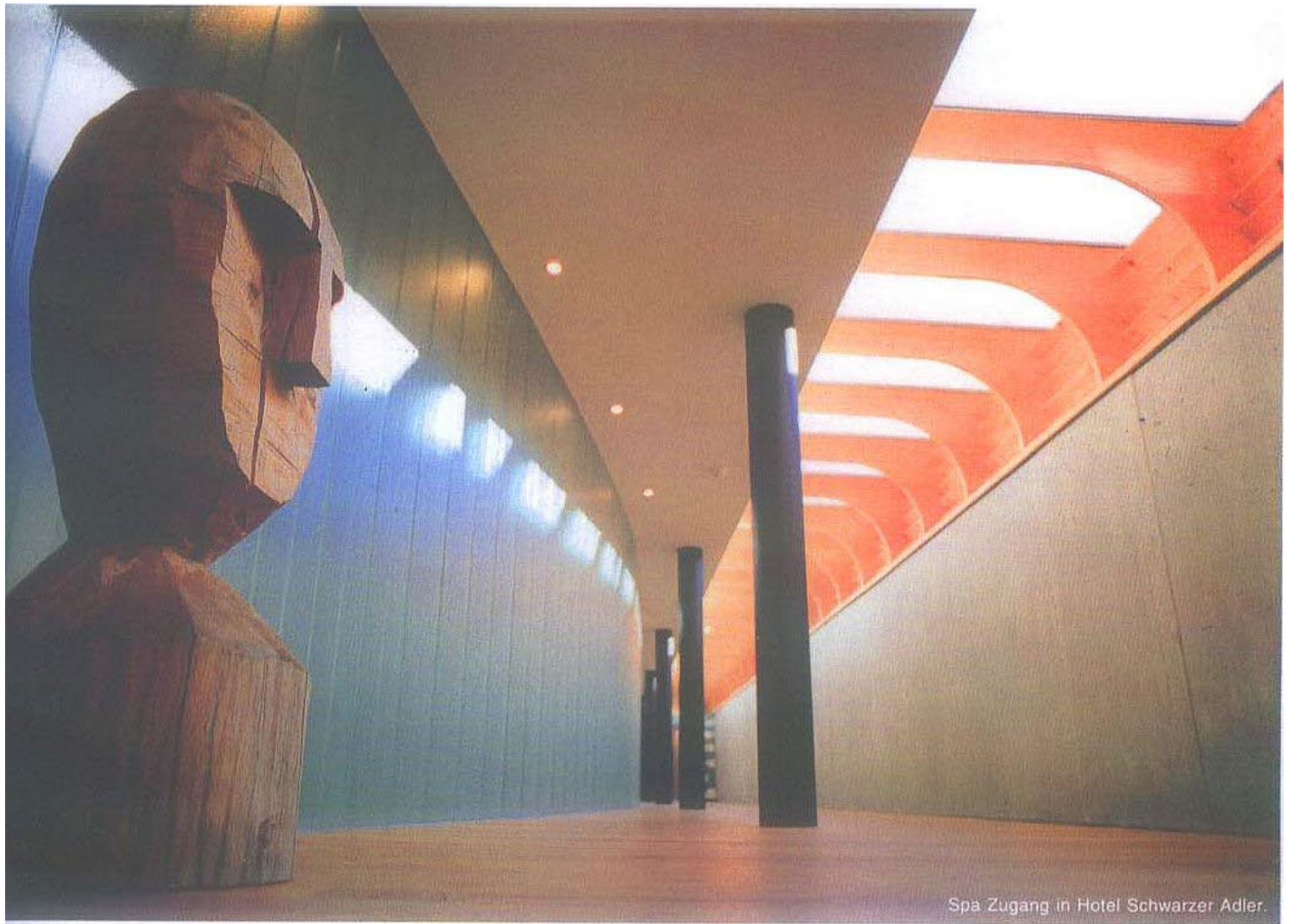
GORGEOUSLY ECLECTIC

These are the spanking new elegant Harisch Suites — grand and huge area, modern and stylishly suave in character. In fact, you'll rarely see such calibrated dynamic colour interpretation in design. As you approach the typical Tirolean Alpine Chalet with deep amber glows from within casting a sensuous tinge on the snow outside, you are totally awed by the 360 degree transformation in interior dazzle that silences you into sheer admiration.

The combos on three levels speak immaculate sophistication. Dull grey fluff carpeting hold dark mahogany



Wellness bath in Harisch Suite.



Spa Zugang in Hotel Schwarzer Adler.



Kitchen complex in Harisch Suites.

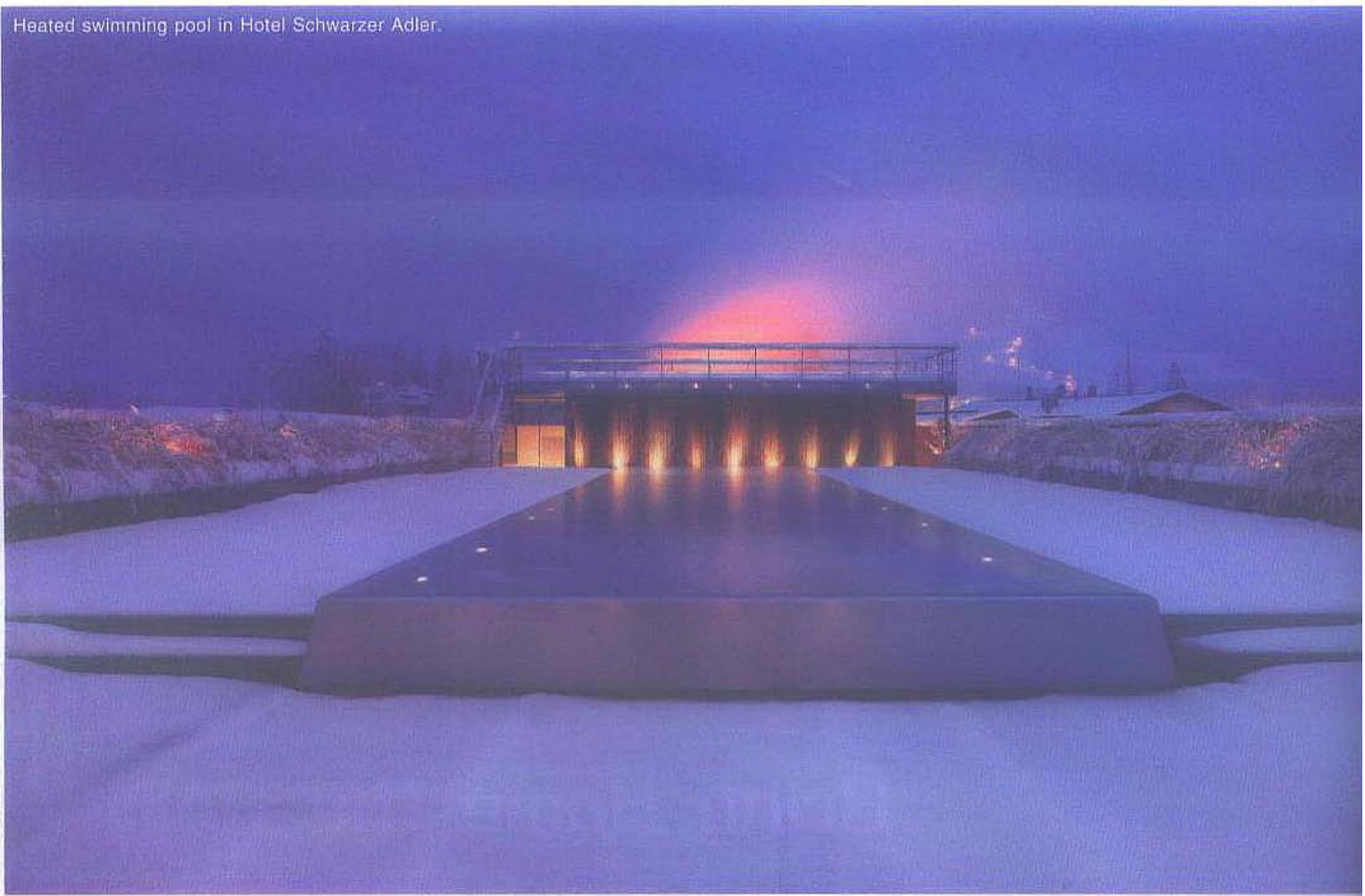
settees, large and easy velvet black sofas, teakwood dining area, white wall façades and deep lavender cushion ensembles, illuminated by a wall hanging round white lamp shade and a drum-shaped ribbed pedestal lamp light. Contrasting this blend is a bedroom in white wall washed with a recessed dull bluish-grey niche, gracing feather-soft linen king beds with chrome reading lamps, deep vermilion headboards and leg spread.

In house spa bathrooms enliven the unwinding experience with strobe digital laser light temperature controlled water jets in wave motion to massage body parts, revolving rain showers and sauna terraced sit-ins allow relaxing steam dreams. Sloping wooden ceilings with boxed-in windows for optimum natural light have end-to-end beveled glass-paned windows that bring the panoramic Alpine vistas into the living hall.

The Harisch Suites are perhaps one of the highest altars of platinum-crested personalized in-residence living in the world. Its optimum leisure features and state-of-the-art technology, aesthetics and spatial interior design finesse are accomplished to enthrall with evocative élan ☼

Text & Photographs: Kishore Iyengar

Heated swimming pool in Hotel Schwarzer Adler.



Rooftop heated swimming pool in Hotel Schwarzer Adler.